



Transmate

1-800-426-9341
www.romac.com

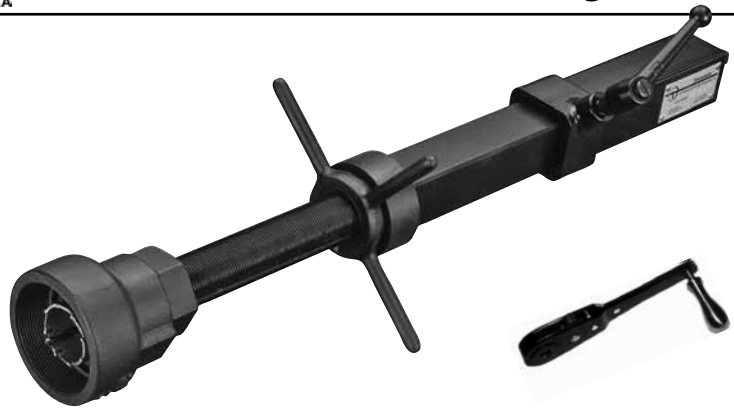


TapMate Too™

3/4" to 2" Range of Cuts

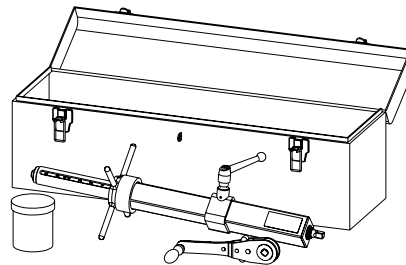
Material Specifications

- Weighs 10 lbs., allowing easy handling and operation
- Safety brake provides controlled boring bar release on high pressure cuts
- Sturdy construction with more than 12" of boring bar travel
- Taps any pipe commonly used in underground water mains
- Simple construction allows in-house maintenance and repair



To Order:

1. Order Base Machine
2. Order Cutters or Spade Bits per desired pipe type and size
3. Order Adapters per size and corp outlet type
4. Order Arbors per size
5. Select Power Option.



ITEM NUMBER	DESCRIPTION	LIST PRICE
351-00	Base Machine and Tool Box	\$1,608.65
Included with Tapmate Too Machine:		
351-60-1	Hand Ratchet	included
351-61	Tool Box	included
353-10-1	Tapping Compound	included

POWER OPTIONS, you choose how to power your TapMate Too...

TapMate Too Hydraulic Drive *372-351

See Page TM-29



ITEM NUMBER	DESCRIPTION	LIST PRICE
*372-351	TapMate Too Hydraulic - Drive System, complete	\$5,178.80
*372-351-01	Base Unit	included

Ridgid 690 Electric Drive
See Page TM-29



373-351	Ridgid 690 Electric Drive with 1/2" Adapter for TM-Too	\$2,874.32 included
370-70	GF-15 Ground Fault Interrupter Plug (required)	123.00

For other power options, contact Romac Industries, Inc.

*Considered Hazardous Material When Shipped by Air

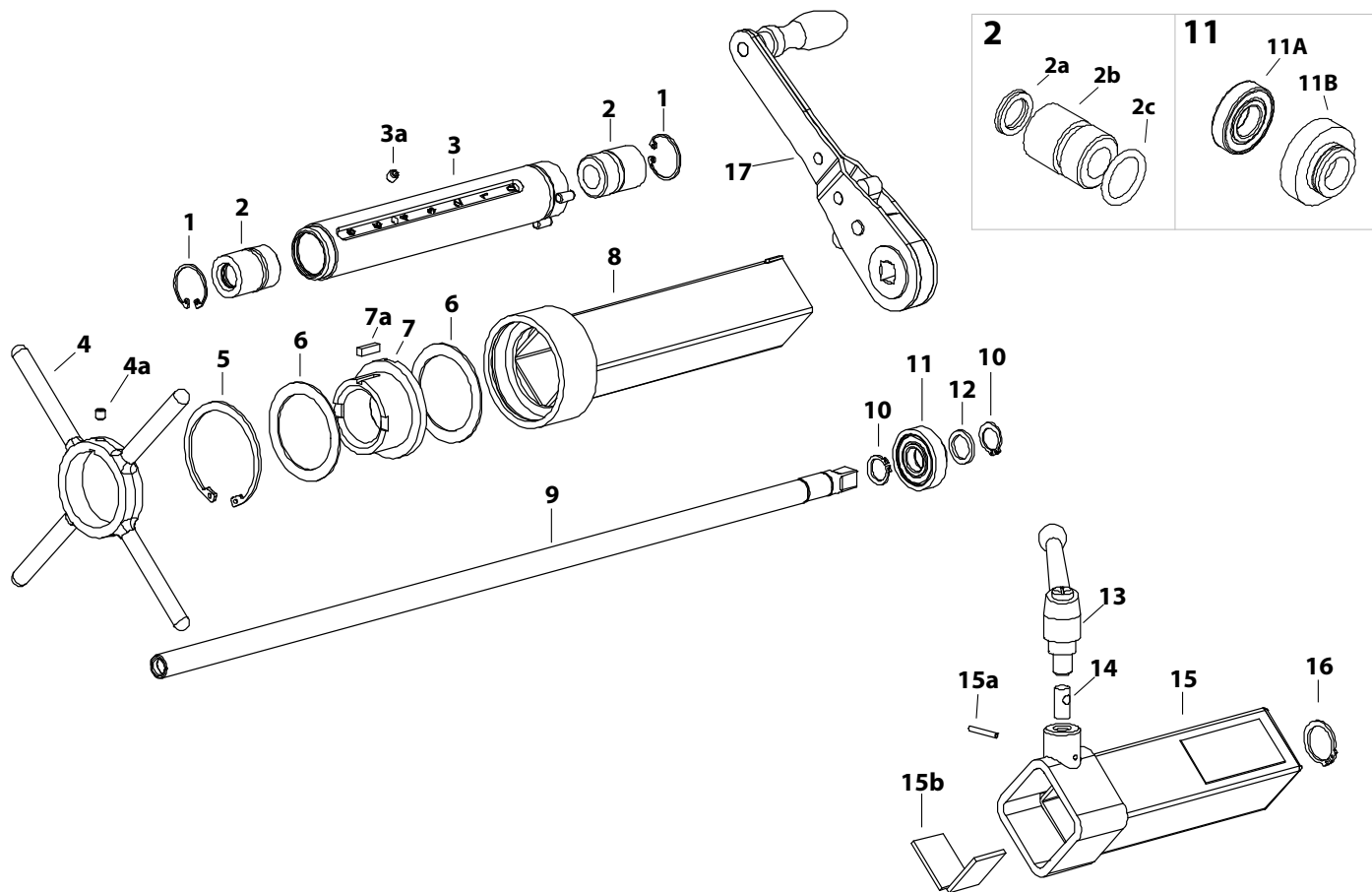


Transmate

1-800-426-9341
www.romac.com



TapMate Too™ Parts



REF NO.	DESCRIPTION	ITEM NO.	LIST PRICE	REF NO.	DESCRIPTION	ITEM NO.	LIST PRICE
1	Lead Tube Snap Ring (2 required)	351-23-54	ea. \$2.40	11	Shaft End Bushing Complete	351-22-1A	112.99
2	Lead Tube Bushing Complete (includes Bushing, Shaft Seal, O-Ring)	351-22-2A	75.36	11a	Shaft End Bearing	351-20-56	50.20
2a	Poly Pak Shaft Seal	351-57-2	6.26	11b	Shaft End Bushing	351-22-1	82.87
2b	Lead Tube Bushing	351-22-2	69.05	12	Shaft End Nylatron Washer	351-20-531	8.80
2c	Lead Tube Bushing O-Ring	351-57-1-62	1.23	13	Brake Handle	351-29-2	37.70
3	Lead Tube	351-23	377.87	14	Brake Pin	351-50-2	30.95
3a	Lead Tube Set Screw	351-23-512	1.23	15	Brake Tube (includes Brake Pads)	351-30	277.45
4	Handle for Lead Nut	351-29-1	152.02	15a	Roll Pin	351-50-3	1.23
4a	Arbor & Handle Set Screw	351-51-2	1.23	15b	Brake Pad (2 required)	351-30-1	ea. 14.85
5	Lead Nut Snap Ring	351-24-54	3.76	16	Shaft End Bushing Snap Ring	351-22-54	2.40
6	Lead Nut Nylatron Washers (2 required)	351-24-531	ea. 14.83	17	Ratchet Wrench	351-60-1	205.10
7	Lead Nut	351-24	152.02	NOT ILLUSTRATED			
7a	Lead Nut Key	351-24-66	4.85	Toolbox		351-61	188.91
8	Thrust Tube	351-32	123.27				
9	Shaft	351-20	185.90				
10	Shaft End Snap Ring (2 required)	351-20-54	ea. 2.40				



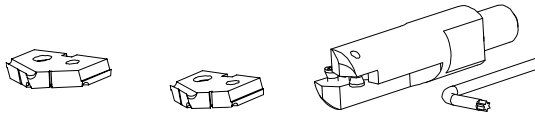
Transmate
1-800-426-9341
www.romac.com



TapMate Too™ Accessories

SPADE BITS

The spade bit provides a low cost alternative to the traditional twist drill bit, pilot and holesaw/cutters. Spade bits are attached to the spade bit holder using the two Torx™ screws provided. Spade bits are available in the 3/4" nominal (23/32" actual), and the 1" nominal (7/8" actual) sizes.

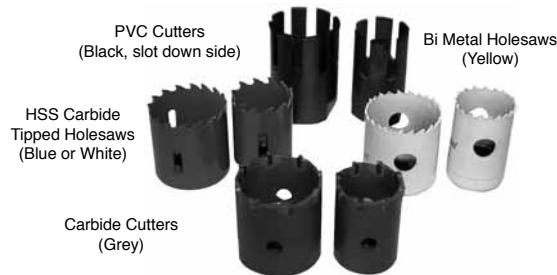


ITEM NUMBER	DESCRIPTION	LIST PRICE
351-03-106	3/4" Spade Bit (actual OD 23/32")	\$71.82
351-03-108	1" Spade Bit (actual OD 7/8")	75.36
351-03-12	Spade Bit Holder (includes Torx Key Wrench and Screws; required for Spade Bit use)	257.36
351-60-5	Torx Key Wrench	7.55
351-03-512	Spade Bit Screw (2 required)	ea. 5.47

HOLESAWS

Five types of Holesaws are available in 5 sizes

- The carbide cutter is best for use on A/C, Cast Iron, or Ductile Iron pipe.
- The HSS carbide tipped Holesaw works well on ductile iron, cast iron and A/C.
- The Bi-Metal holesaw is best for use with Steel Pipe, but may be used for ductile, cast iron and A/C as well.
- The PVC Cutter is necessary for cutting into plastic pipe.
- Special deep throated cutters for HDPE (see page **TM-7**) are also available.



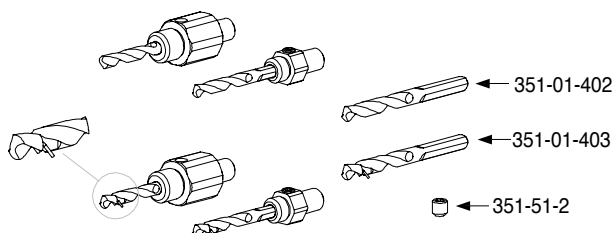
Holesaw Size Chart

Nominal	O.D.
3/4"	11/16"
1"	7/8"
1 1/4"	1 1/8"
1 1/2"	1 3/8"
2"	1 3/4"

ITEM NUMBER	DESCRIPTION	LIST PRICE
For Ductile, Cast Iron & A/C	351-01-106 3/4" Carbide Cutter	\$118.05
	351-01-108 1" Carbide Cutter	133.07
	351-01-110 1 1/4" Carbide Cutter	139.83
	351-01-112 1 1/2" Carbide Cutter	150.68
	351-01-116 2" Carbide Cutter	203.40
For Ductile, Cast Iron & A/C	351-01-406 3/4" HSS Carbide Tip Holesaw	41.43
	351-01-408 1" HSS Carbide Tip Holesaw	48.73
	351-01-410 1 1/4" HSS Carbide Tip Holesaw	53.53
	351-01-412 1 1/2" HSS Carbide Tip Holesaw	61.57
	351-01-416 2" HSS Carbide Tip Holesaw	68.95
For Ductile, Cast Iron, A/C & Steel	351-01-506 3/4" Bimetal Holesaw	23.31
	351-01-508 1" Bimetal Holesaw	26.37
	351-01-510 1 1/4" Bimetal Holesaw	27.61
	351-01-512 1 1/2" Bimetal Holesaw	28.89
	351-01-516 2" Bimetal Holesaw	37.70
For PVC only	351-01-206 3/4" PVC Cutter	122.80
	351-01-208 1" PVC Cutter	125.58
	351-01-210 1 1/4" PVC Cutter	138.15
	351-01-212 1 1/2" PVC Cutter	150.68
	351-01-216 2" PVC Cutter	163.25

HOLESAW ARBORS

The arbors mate the end of the shaft to the holesaw/cutter being used. Two arbors are available. The Small Arbor accommodates 3/4" - 1 1/4" cuts. The Large Arbor is necessary for 1 1/2" and 2" cuts.



ITEM NUMBER	DESCRIPTION	LIST PRICE
351-14-1	Small Holesaw Arbor, includes Arbor Pilot Drill 351-01-402 (for 3/4", 1" and 1 1/4" holesaws/cutters)	\$80.39
351-14-2	Large Holesaw Arbor, includes Arbor Pilot Drill 351-01-402 (for 1 1/2" and 2" holesaws/cutters)	125.58
351-01-402	1/4" Arbor Pilot Drill (for Small and Large Holesaw Arbor)	16.32
351-01-403	1/4" Arbor Pilot Drill w/Retaining Spring	29.91
351-51-2	Arbor & Handle Set Screw	1.23
351-14-5	Small Holesaw Arbor, includes Arbor Pilot Drill 351-01-403 (for 3/4", 1" and 1 1/4" holesaws/cutters)	93.97
351-14-6	Large Holesaw Arbor, includes Arbor Pilot Drill 351-01-403 (for 1 1/2" and 2" holesaws/cutters)	139.15



Transmate

1-800-426-9341
www.romac.com

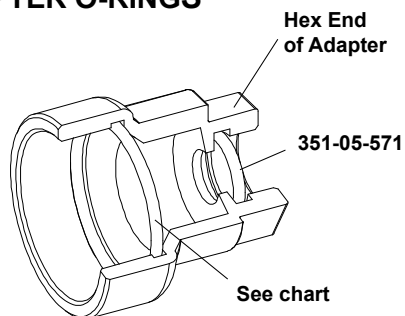


TapMate Too™ Accessories

ADAPTERS

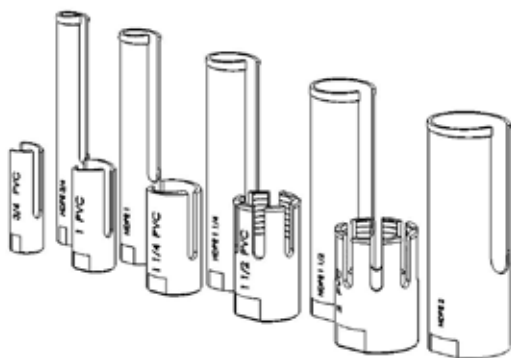
ITEM NUMBER	DESCRIPTION	LIST PRICE	ITEM NUMBER	DESCRIPTION	LIST PRICE
Note: Adapter thread description describes thread machined on the adapter					
351-05-406	3/4" Female Iron Pipe Adapter	\$129.47	351-05-606	3/4" Male Iron Pipe Adapter	\$129.47
351-05-408	1" Female Iron Pipe Adapter	129.47	351-05-608	1" Male Iron Pipe Adapter	129.47
351-05-410	1 1/4" Female Iron Pipe Adapter	129.47	351-05-610	1 1/4" Male Iron Pipe Adapter	129.47
351-05-412	1 1/2" Female Iron Pipe Adapter	129.47	351-05-612	1 1/2" Male Iron Pipe Adapter	129.47
351-05-416	2" Female Iron Pipe Adapter	129.47	351-05-616	2" Male Iron Pipe Adapter	129.47
351-05-420	2 1/2" Female Iron Pipe Adapter	129.47	351-05-706	3/4" Fine Thread Compression Adapter	129.47
351-05-506	3/4" Coarse Thread Compression Adapter	129.47	351-05-708	1" Fine Thread Compression Adapter	129.47
351-05-508	1" Coarse Thread Compression Adapter	129.47	351-05-710	1 1/4" Fine Thread Compression Adapter	129.47
351-05-510	1 1/4" Coarse Thread Compression Adapter	129.47	351-05-712	1 1/2" Fine Thread Compression Adapter	129.47
351-05-512	1 1/2" Coarse Thread Compression Adapter	129.47	351-05-716	2" Fine Thread Compression Adapter	129.47
351-05-516	2" Coarse Thread Compression Adapter	129.47			

ADAPTER O-RINGS



ITEM NUMBER	DESCRIPTION	LIST PRICE
351-05-571	TT Adapter O-Ring (All TT Adapters)	\$2.51
351-05-5571-1	TT Adapter O-Ring 3/4" Coarse Thread Compression	2.51
351-05-5571-2	TT Adapter O-Ring 1" Coarse Thread Compression	2.51
351-05-5571-3	TT Adapter O-Ring 1 1/4" Coarse Thread Compression	2.51
351-05-5571-4	TT Adapter O-Ring 1 1/2" Coarse Thread Compression	2.51
351-05-5571-5	TT Adapter O-Ring 2" Coarse Thread Compression	2.51
351-05-706-57	TT Adapter O-Ring 3/4" Fine Thread Compression	2.51
351-05-708-57	TT Adapter O-Ring 1" Fine Thread Compression	2.51
351-05-710-57	TT Adapter O-Ring 1 1/4" Fine Thread Compression	2.51
351-05-712-57	TT Adapter O-Ring 1 1/2" Fine Thread Compression	2.51
351-05-716-57	TT Adapter O-Ring 2" Fine Thread Compression	2.51

HDPE ADAPTERS & HOLESAWS



NOTE: HDPE cutters require HDPE adapters. This is due to the increased overall length (illustrated above with PVC cutters)

ITEM NUMBER	DESCRIPTION	LIST PRICE
Note: Adapter thread description describes thread machined on the adapter		
351-05-106 . . . 3/4"	HDPE Adapter FIP	\$355.36
351-05-108 . . . 1"	HDPE Adapter FIP	356.95
351-05-110 . . . 1 1/4"	HDPE Adapter FIP	364.89
351-05-112 . . . 1 1/2"	HDPE Adapter FIP	378.65
351-05-116 . . . 2"	HDPE Adapter FIP	391.36
351-05-906 . . . 3/4"	HDPE Adapter FC	355.36
351-05-908 . . . 1"	HDPE Adapter FC	356.95
351-05-910 . . . 1 1/4"	HDPE Adapter FC	364.89
351-05-912 . . . 1 1/2"	HDPE Adapter FC	378.65
351-05-916 . . . 2"	HDPE Adapter FC	391.36
351-05-206 . . . 3/4"	HDPE Adapter MIP	355.36
351-05-208 . . . 1"	HDPE Adapter MIP	356.95
351-05-210 . . . 1 1/4"	HDPE Adapter MIP	364.89
351-05-212 . . . 1 1/2"	HDPE Adapter MIP	378.65
351-05-216 . . . 2"	HDPE Adapter MIP	391.36
351-01-906 . . . 3/4"	HDPE Cutter	418.03
351-01-908 . . . 1"	HDPE Cutter	420.42
351-01-910 . . . 1 1/4"	HDPE Cutter	428.34
351-01-912 . . . 1 1/2"	HDPE Cutter	436.15
351-01-916 . . . 2"	HDPE Cutter	444.20