



**Transmate**

1-800-426-9341  
www.romac.com

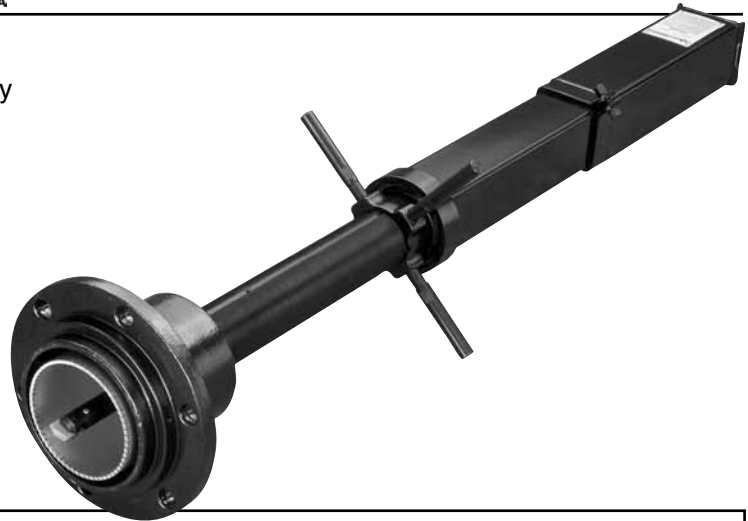


# TapMate™

## 3" to 12" Range of Cuts

**Material Specifications**

- **LATERAL TAPS** - For 3" - 12" lateral taps.
- **LIGHTWEIGHT** - Weighs 65 lbs., allowing easy handling and operation
- **EASY-TO-USE** - No hidden gears or mechanisms. Simple control and the depth scale is always visible.
- **PIPE COMPATIBILITY** - Taps any pipe commonly used in underground water mains
- **EASY TO MAINTAIN** - Simple construction allows in-house maintenance and repair
- **FLEXIBLE** - Use with hydraulic, electric or air drive units.



**To Order:**

1. Order Base Machine
2. Order Cutters per size
3. Order Adapters per size and outlet type
4. Order Extra Spade Bit (350-03-08) if doing A/C taps
5. If doing 10" and 12" taps, you must order Pilot Drill Extension (350-14)
6. Select Power Unit (below)

ITEM NUMBER	DESCRIPTION	LIST PRICE	ITEM NUMBER	DESCRIPTION	LIST PRICE		
<b>350-00</b>	<b>TapMate™ Base Machine &amp; Storage Box</b> For lateral tapping	<b>\$10,560.32</b>	<b>Shell Cutters</b>				
350-21-A	1" Shaft Nose	included	For Ductile, Cast Iron, Steel, A/C & PVC	350-01-1024	3" Carbide Cutter	2 1/2"	\$510.27
350-03-08	1" Spade Bit	"		350-01-1032	4" Carbide Cutter	3 1/2"	663.44
350-04	PVC Pilot (required for any plastic pipe taps)	"		350-01-1048	6" Carbide Cutter	5 1/2"	983.36
350-61	Storage Box	"		350-01-1064	8" Carbide Cutter	7 1/2"	1,300.66
353-10-1	Tapping Compound	"		350-01-1080	10" Carbide Cutter	9 1/2"	2,904.31
				350-01-1096	12" Carbide Cutter	11 1/2"	3,435.21
<b>360-00</b>	<b>QuikValve™ Base Machine</b> For lateral tapping, QuikValve™ & InsertaValve™ installations  For QuikValve see QV-2 & InsertaValve see QV-7	See Page QV-5 for pricing.	For HDPE & PVC	350-01-2024	3" Cutter for HDPE & PVC Pipe	2 1/2"	508.94
				350-01-2028	Cutter for HDPE & PVC Pipe	3"	661.89
				350-01-2032	4" Cutter for HDPE & PVC Pipe	3 1/2"	661.89
				350-01-2040	Cutter for HDPE & PVC Pipe	5"	980.97
				350-01-2048	6" Cutter for HDPE & PVC Pipe	5 1/2"	980.97
				350-01-2056	Cutter for HDPE & PVC Pipe	7"	1,295.02
				350-01-2064	8" Cutter for HDPE & PVC Pipe	7 1/2"	1,295.02
				350-01-2072	Cutter for HDPE & PVC Pipe	9"	2,897.07
				350-01-2080	10" Cutter for HDPE & PVC Pipe	9 1/2"	2,897.07
				350-01-2088	Cutter for HDPE & PVC Pipe	11"	3,428.04
			350-01-2096	12" Cutter for HDPE & PVC Pipe	11 1/2"	3,428.04	
			For Steel	350-01-5024	3" Cutter for Steel	2 1/2"	510.17
				350-01-5032	4" Cutter for Steel	3 1/2"	663.44
				350-01-5048	6" Cutter for Steel	5 1/2"	983.36
				350-01-5064	8" Cutter for Steel	7 1/2"	1,300.66
				350-01-5080	10" Cutter for Steel	9 1/2"	2,904.31
				350-01-5096	12" Cutter for Steel	11 1/2"	3,436.74
<b>NOTE: Shell Cutters can be resharpened, and retooled</b>							
<b>Accessories</b>							
350-03-08	1" Spade Bit						\$96.12
350-21-A	Shaft Nose (includes 1" Spade Bit)						360.49
350-14	Pilot Drill Extension (required for 10" and 12" taps)						143.78
350-04	PVC Pilot						181.50
350-04H	HDPE Pilot						365.02
350-05-571	Adapter Bell O-Ring						16.41
350-05-512	Adapter Set Screw						6.63

Please call Romac for recommendations on ordering and using HDPE Holesaws

- 1 10" and 12" Cutters require the Pilot Drill Extension
- 2 HDPE Pilot needed (350-04H) if tapping HDPE pipe only
- \* Considered hazardous material if shipped by air.



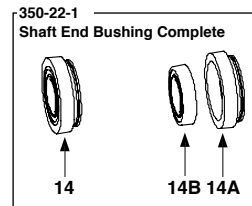
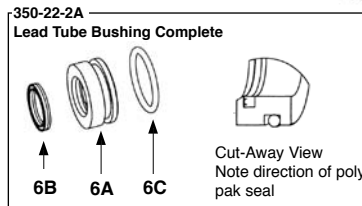
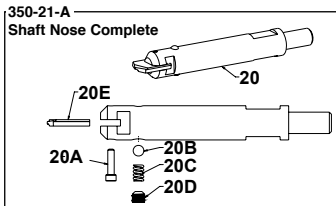
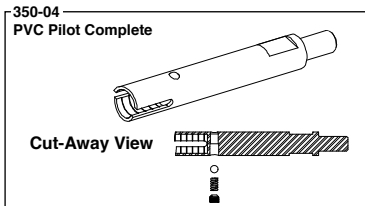
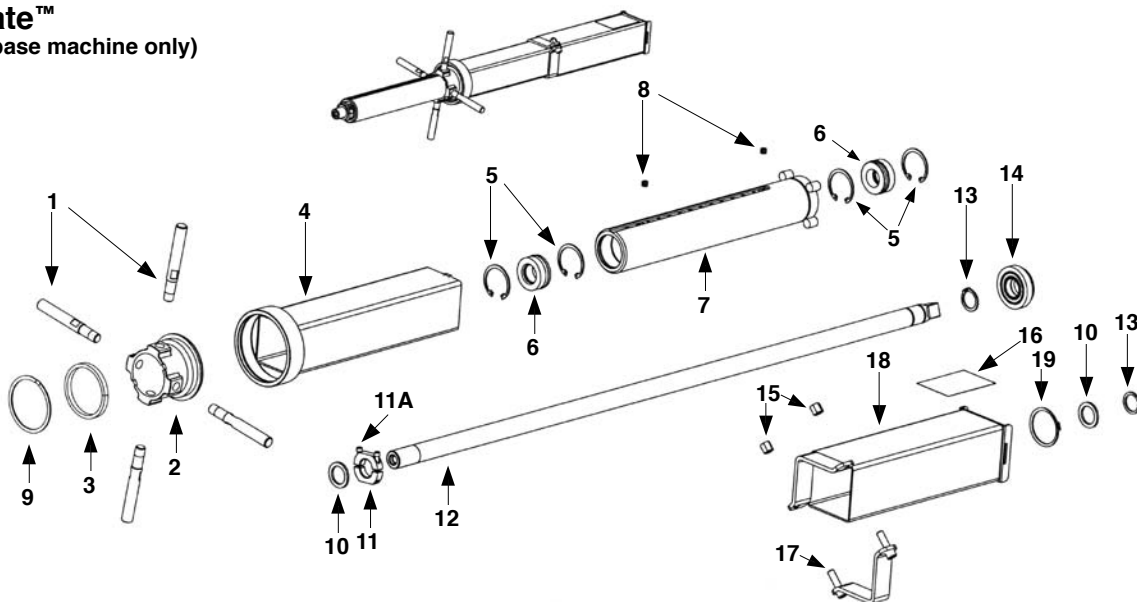
**Transmate**

1-800-426-9341  
www.romac.com



# TapMate™ Parts List

## TapMate™ 350-00 (base machine only)



REF NO.	DESCRIPTION	ITEM NO.	LIST PRICE
1	Handle for Lead Nut (4 required)	350-29	\$92.32
2	Lead Nut	350-24	593.36
3	Lead Nut Nylatron Washer	350-24-531	41.12
4	Thrust Tube	350-32	857.03
5	Lead Tube Snap Ring (4 required)	350-23-54	11.89
6	Lead Tube Bushing Complete (2 required)	350-22-2A	249.59
6A	Lead Tube Bushing Only (2 required)	350-22-2	202.87
6B	Shaft Poly Pak Seal (1 per bushing, 2 per machine)	350-57-2	25.36
6C	Lead Tube Bushing O-Ring (1 per bushing, 2 per machine)	350-57-1-62	13.19
7	Lead Tube	350-23	1,410.77
8	Lead Tube Socket Plug (2 required)	350-23-512	6.63
9	Lead Nut Snap Ring	350-24-54	26.37
10	Jam Nut Thrust Washer (2 required)	350-20-531	20.39
11	Jam Nut (for cutters)	350-52	55.45
11A	Jam Nut Set Screw	350-52-1	1.18
12	Shaft Main	350-20	922.57
13	Shaft End Snap Ring (2 required)	350-20-54	11.89
14	Shaft End Bushing Complete	350-22-1	258.45
14A	Shaft End Bushing	350-22	143.42
14B	Shaft End Bearing	350-20-56	118.68
15	Brake Nut (2 required)	350-31-52	7.91
16	Serial Number Plate	350-58	14.47
17	Brake Half, Threaded	350-31	110.74
18	Brake Tube Complete	350-30	857.03
19	Shaft End Bushing Snap Ring	350-22-54	11.89
20	Shaft Nose Complete	350-21-A	360.49
20A	Spade Bit Lock Screw	350-03-531	6.63
20B	Coupon Retainer Ball (5/16)	350-21-561	6.63
20C	Coupon Retainer Spring	350-21-55	7.06
20D	Coupon Retainer Set Screw	350-21-512	6.63
20E	1" Spade Bit	350-03-08	96.12